

Fund Objectives

The fund mainly invests in companies that are listed in Saudi "Nomu - Parallel Market". In addition, the fund manager is allowed to invest a maximum of 50% of the fund's net assets value in small and medium cap companies' shares that are listed in main market. Besides, fund can invest in units of listed public funds that are licensed by Saudi Capital Market Authority. In addition to the ability of investing available cash in term deposits in Saudi Riyal in licensed Saudi banks, where all investments to be compatible with Shariah guidelines that approved by the fund's Shariah committee.

Fund Facts

Fund size (SAR)	1.4 M
Fund inception date	05/04/2017
Unit Price (SAR)	1.14
Benchmark	Parallel Market Index (NOMU)

Breakdown By Market Cap

<5bn SAR	12
>5bn SAR <10bn SAR	0
>10bn SAR	3

Top 5 Positions	Fund	Benchmark
THOB ALASEEL	16.85%	43.24%
BAAZEEM	8.81%	9.65%
RAYDAN	8.69%	9.55%
Bahri	8.43%	-
ALKATHIRI	8.17%	1.18%

Contact Information:

Tel:+966 11 419 1797

Fax:+966 11 419 1899

P.O.Box 63762

Saudi Arabia - Riyadh 11526

www.obic.com.sa

Disclaimer: Osool & Bakheet Investment Company "OBIC" has made the best efforts to ensure that data collected hereby is true and accurate, even though, "OBIC" does not guarantee this information nor indemnify any unintentional error involved. The information mentioned here is not considered an advertisement for Osool & Bakheet products, nor does it offer an advice to buy, sell, or commit any investment actions. Investing in equities or any other investment instruments linked to equities, such as mutual funds, involves high volatility reflecting high degree of risk and therefore we recommend to always consult with a qualified financial advisor before investing in these instruments. In addition, we would like to note that the historical performance for any financial instruments or the benchmark does not reflect and could not be considered as a guide for the future performance, and OBIC does not guarantee that this performance will repeat or be the same in the future. To get the Terms and Conditions and see all the details related to Osool & Bakheet Investment company funds and products please visit our website: www.obic.com.sa or kindly visit us at OBIC office: Riyadh, King Fahad Road, Bahrain Tower, mezzanine floor.

Disclaimer:

Osool & Bakheet Investment Company "OBIC" has made the best efforts to ensure that data collected hereby is true and accurate, even though, "OBIC" does not guarantee this information nor indemnify any unintentional error involved. The information mentioned here is not considered an advertisement for Osool & Bakheet products, nor does it offer an advice to buy, sell, or commit any investment actions. Investing in equities or any other investment instruments linked to equities, such as mutual funds, involves high volatility reflecting high degree of risk and therefore we recommend to always consult with a qualified financial advisor before investing in these instruments. In addition, we would like to note that the historical performance for any financial instruments or the benchmark does not reflect and could not be considered as a guide for the future performance, and OBIC does not guarantee that this performance will repeat or be the same in the future. To get the Terms and Conditions and see all the details related to Osool & Bakheet Investment company funds and products please visit our website: www.obic.com.sa or kindly visit us at OBIC office: Riyadh, King Fahad Road, Bahrain Tower, mezzanine floor.

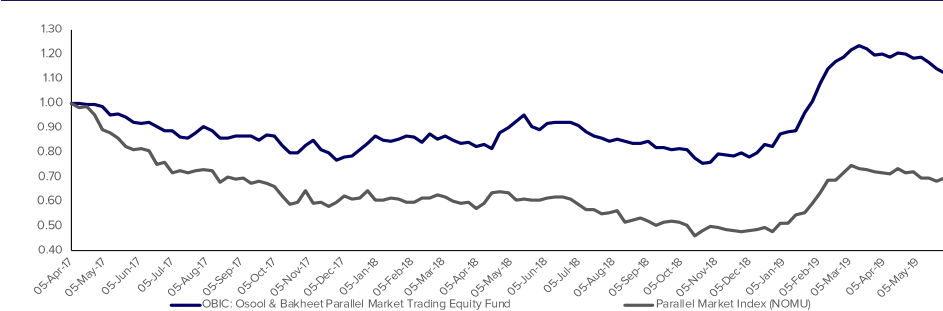
Performance

	Net return	1 Month	YTD	1 Year	Since inception
Fund		-3.80%	30.16%	23.93%	13.89%
Benchmark		-3.07%	39.02%	13.87%	-30.26%
TASI		-8.47%	8.81%	4.35%	20.79%

Fund Statistic

P/E (Median)	13.52
P/BV	0.93
W average market cap	26 M
Median market cap	299 M

Fund Performance



Sector Exposure

Sector	Fund	Benchmark
Banks	5.67%	-
Capital Goods	8.52%	26.10%
Commercial & Professional Svc	5.43%	-
Consumer Durables & Apparel	16.85%	43.24%
Consumer Services	16.23%	11.58%
Diversified Financials	-	-
Energy	8.43%	-
Food & Staples Retailing	-	-
Food & Beverages	-	-
Health Care Equipment & Svc	2.83%	-
Insurance	-	-
Materials	10.88%	1.18%
Media	-	-
Pharma, Biotech & Life Science	-	-
Real Estate Mgmt & Dev't	2.28%	-
Retailing	11.76%	15.49%
Telecommunication Services	-	-
Transportation	-	-
Utilities	-	-
REITs	-	-
Software & Services	2.82%	2.41%

Holdings

Top 5 overweight positions	Fund	Benchmark
ALKATHIRI	8.17%	1.18%
DWF	7.54%	2.03%
ALSAMAANI	5.43%	1.02%
ALOMRAN	2.03%	1.39%
ARAB SEA	2.82%	2.41%

Top 5 underweigh t positions	Fund	Benchmark
THOB ALASEI	16.85%	43.24%
NBM	6.49%	23.69%
ABO MOATI	2.95%	5.85%
RAYDAN	8.69%	9.55%
ALOMRAN	8.81%	9.65%